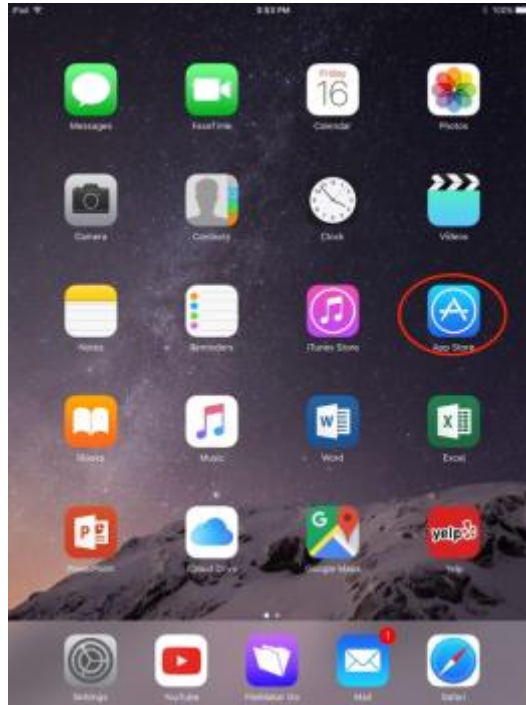


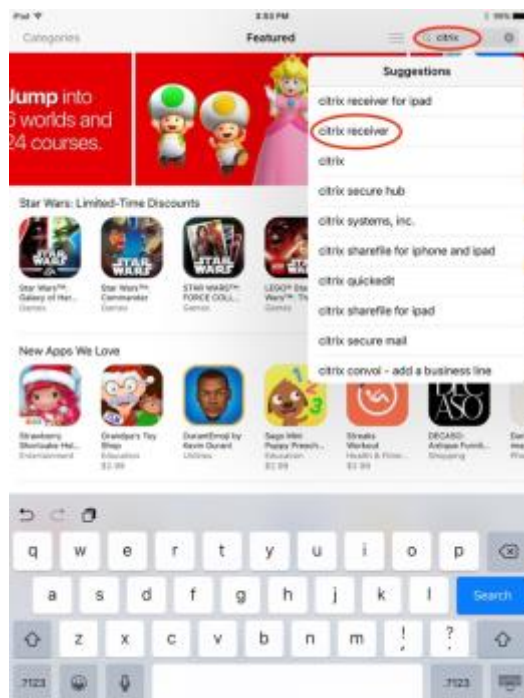
## Citrix Client Installation iPad/iPhone

The Citrix client allows CHRIS users to access the CHRIS database from any location. The Citrix client is free and can be downloaded and installed using this guide. CHRIS data facilitators are responsible for completing the initial setup and installation of the Citrix client on each user's tablet or phone.

**Step 1.** Download the Citrix Receiver App by tapping on the App Store icon:



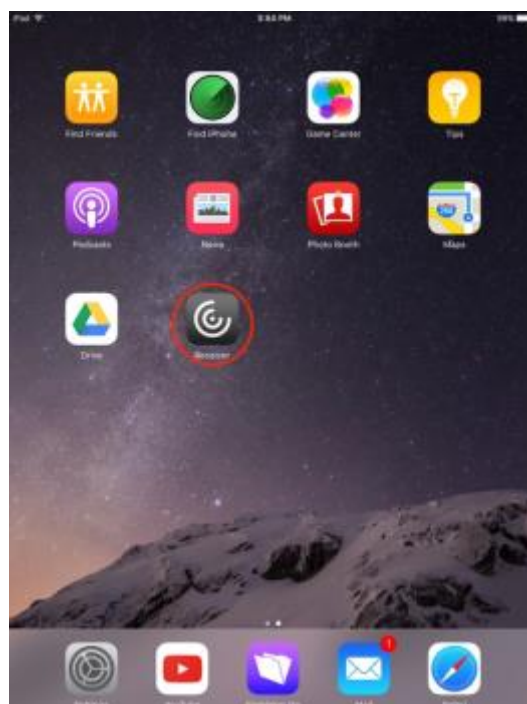
**Step 2.** Use the App Store search feature to find “Citrix Receiver”. Tap it in the Suggestions menu that appears.



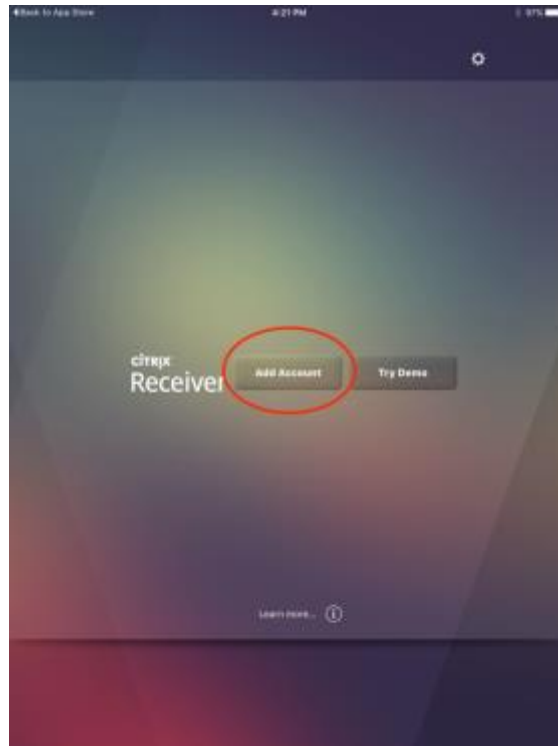
**Step 3.** Tap “Get” or the iCloud icon to download Citrix Receiver onto your device. (Citrix Receiver is free; however, you will need an AppleID and password to complete the download.)



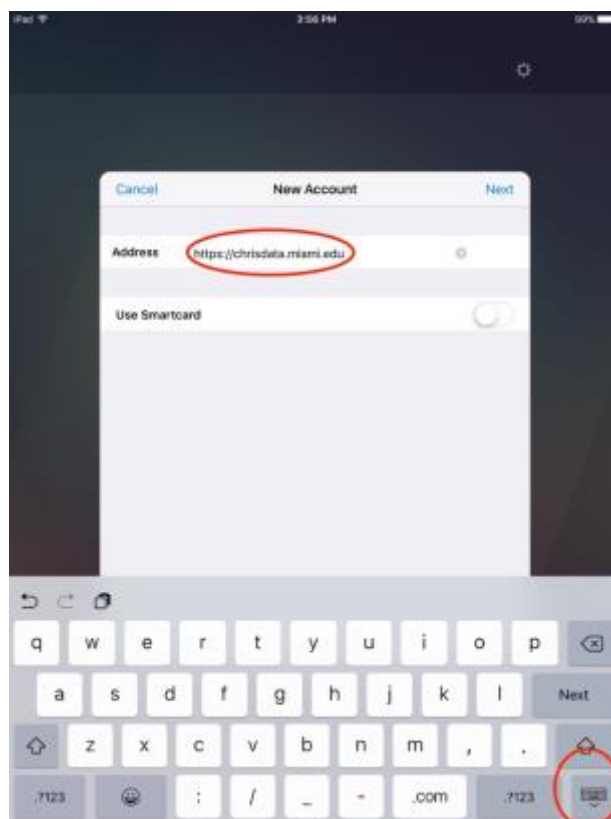
**Step 4.** Once Citrix Receiver is installed, tap on the Citrix icon to setup Citrix Receiver so it will work with CHRIS.



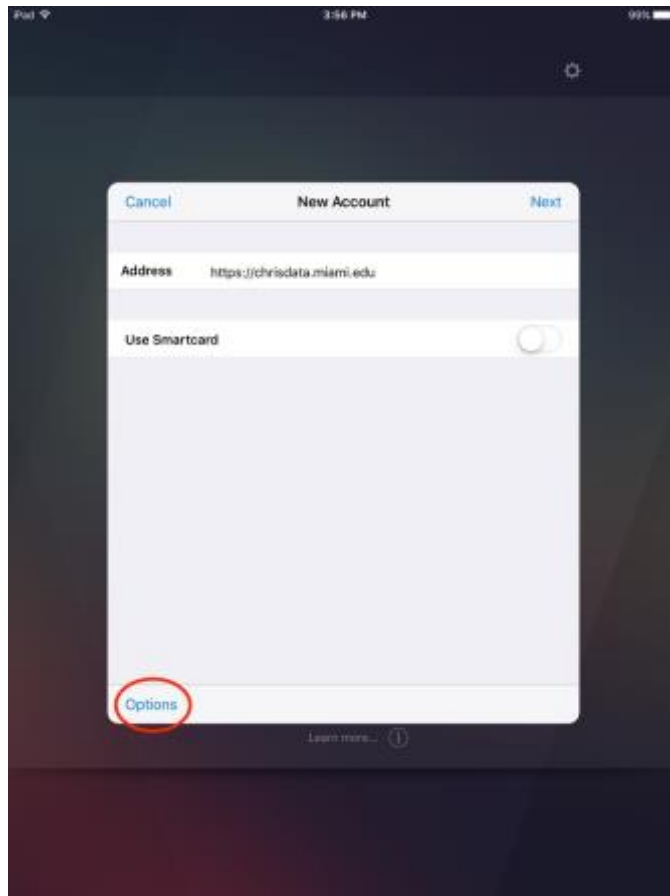
**Step 5.** Tap “Add Account”.



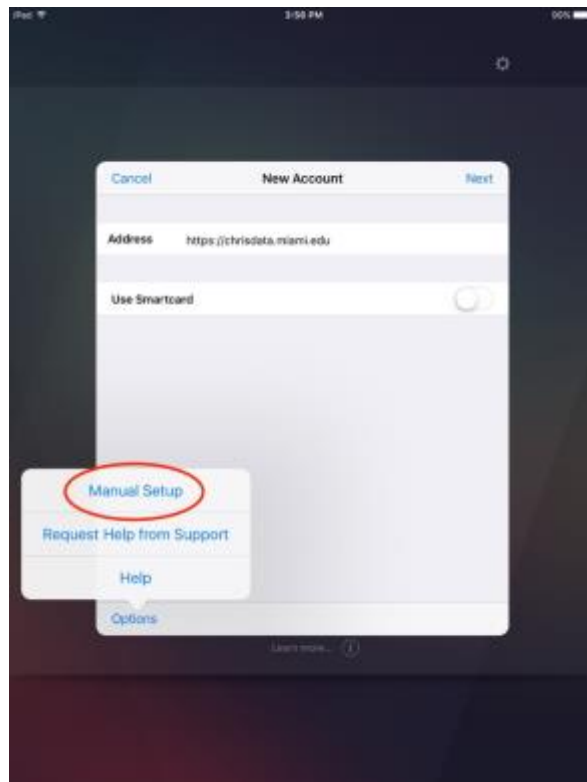
**Step 6.** Enter “https://chrisdata.miami.edu” in the Address field and then tap the button at the bottom right of the keyboard to retract the keyboard.



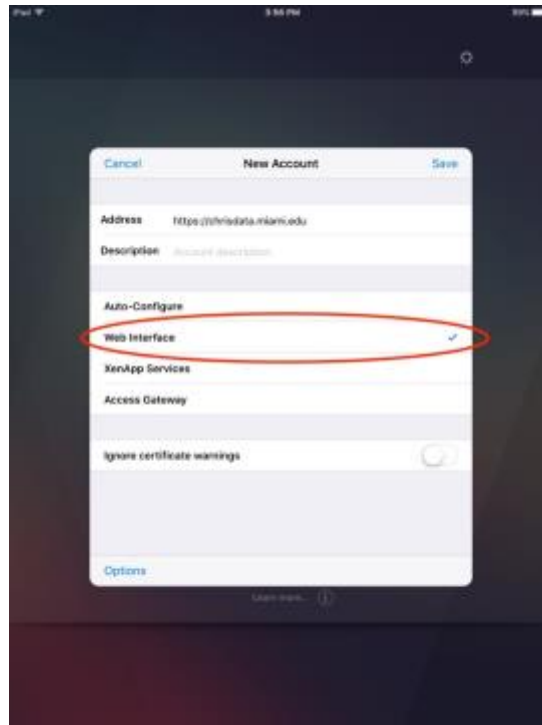
**Step 7.** Tap “Options”.



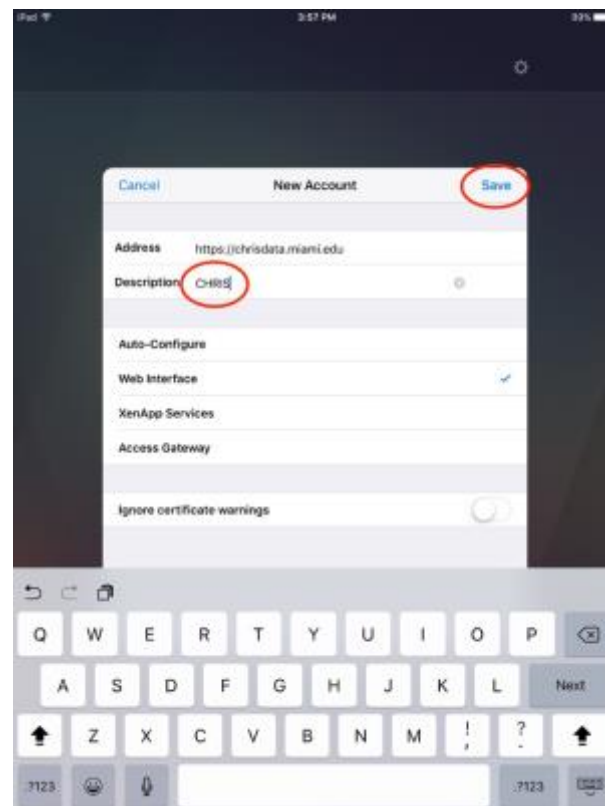
**Step 8.** Select “Manual Setup”.



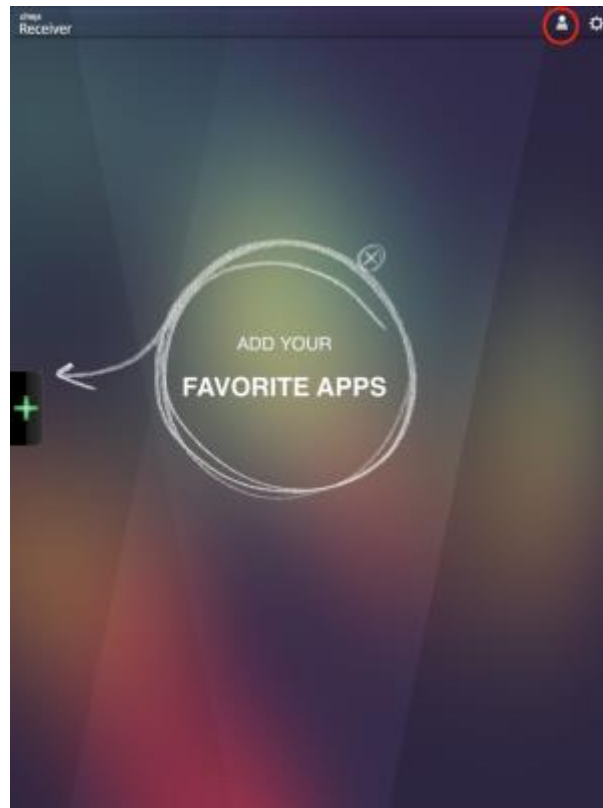
**Step 9.** Tap “Web Interface” to select it.



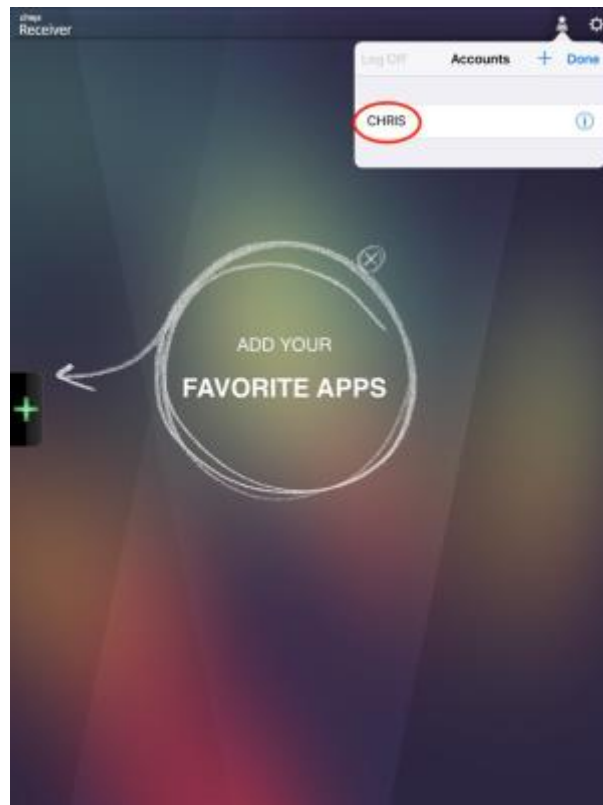
**Step 10.** Tap in the Description field and type “CHRIS”, then tap “Save”.



**Step 11.** To login to CHRIS using an iPad or iPhone, tap on the Citrix icon from Step 4 and then tap the head icon at the top of the screen.



**Step 12.** Tap "CHRIS" in the Accounts window.



**Step 13.** Login to CHRIS as you would from a PC or Mac.



If you experience any issues installing the Citrix Client, please see the [Troubleshooting](#) section or call the CHRIS [Help Desk](#).