

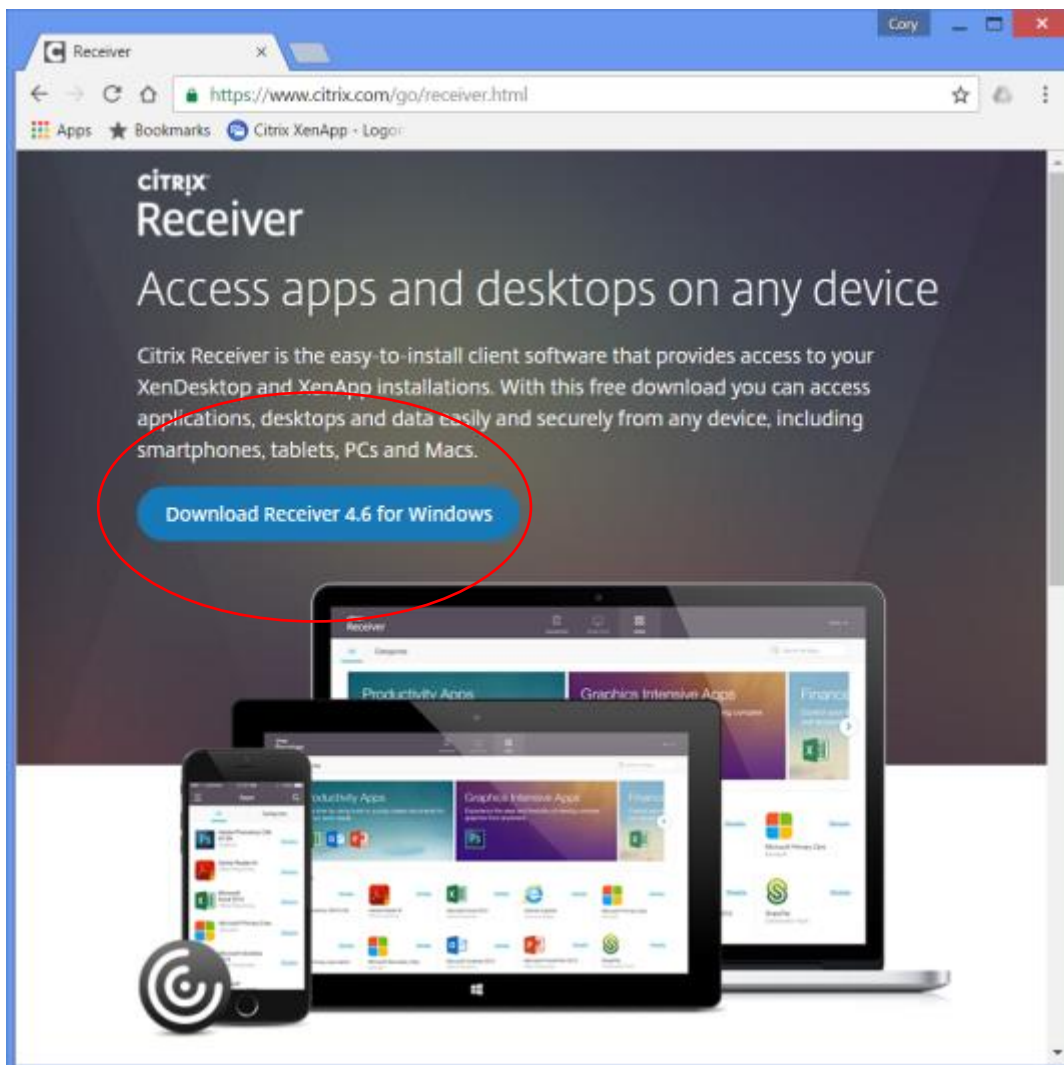
Citrix Client Installation on a PC Using Google Chrome

The Citrix client allows CHRIS users to access the CHRIS database from any location. The Citrix client is free and can be downloaded and installed using this guide. CHRIS data facilitators are responsible for completing the initial setup and installation of the Citrix client on each user's workstation. These instructions apply using Google Chrome browser. To install Citrix Receiver using another browser, contact the Help Desk.

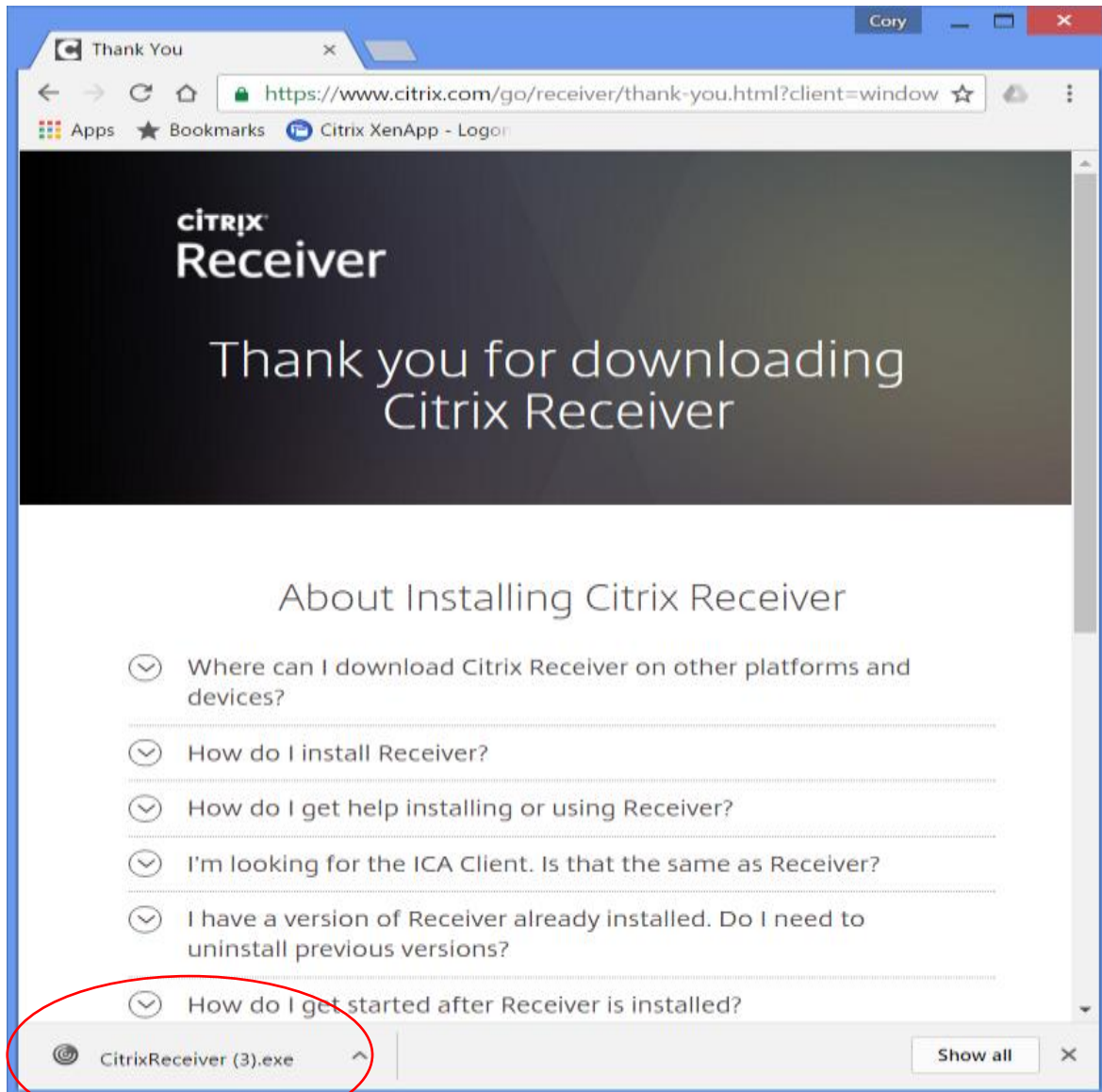
Step 1. Download the Citrix Receiver Client from the Citrix website by clicking here:

[Citrix Receiver.](#)

Step 2. Click the “Download Receiver for Windows” button.
(The Citrix Receiver version number may be different. This will not affect installation.)



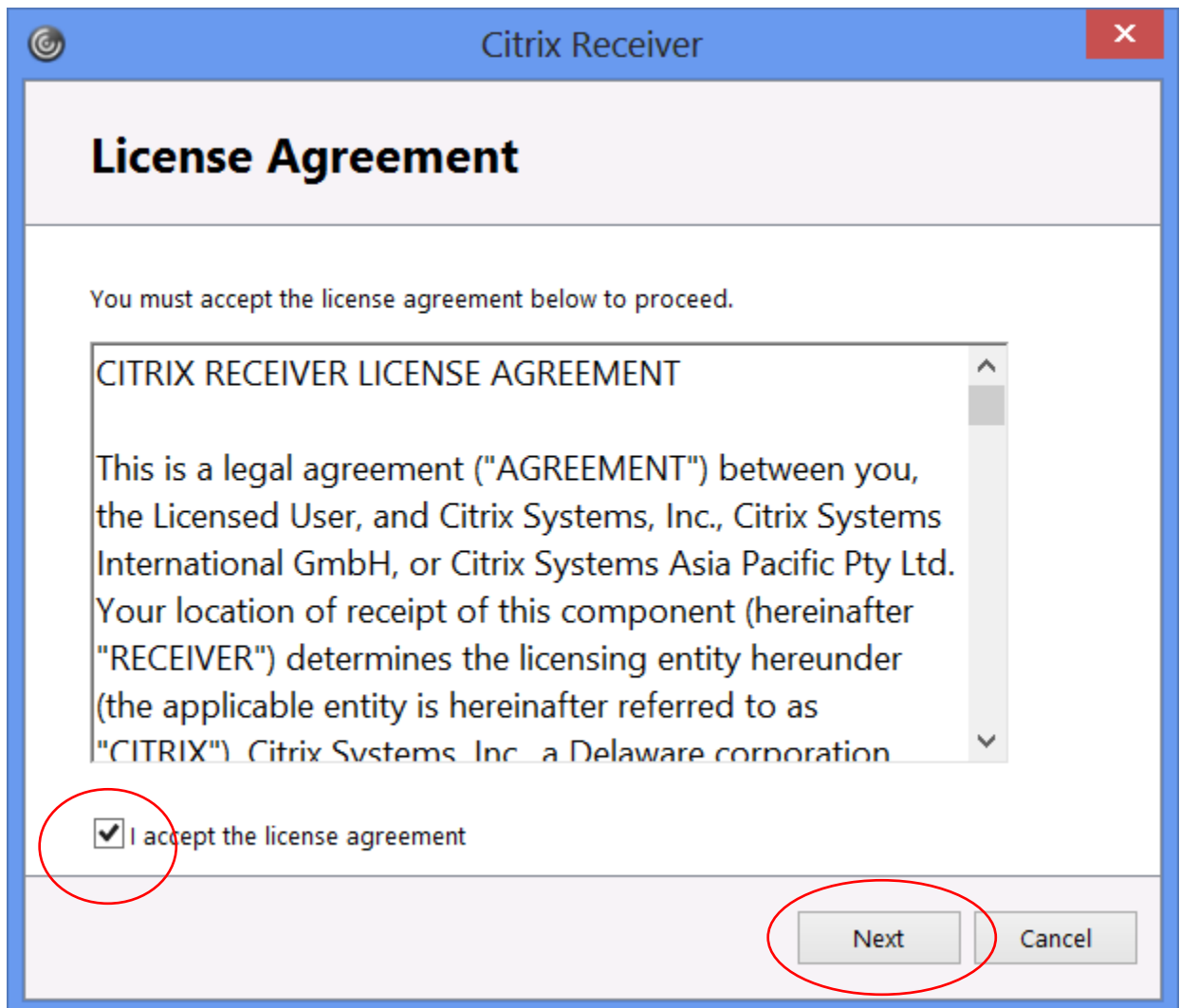
Step 3. When the file has completed downloading, click “CitrixReceiver.exe” at the bottom left corner of the screen.



Step 4. Click “Start” to begin the installation.



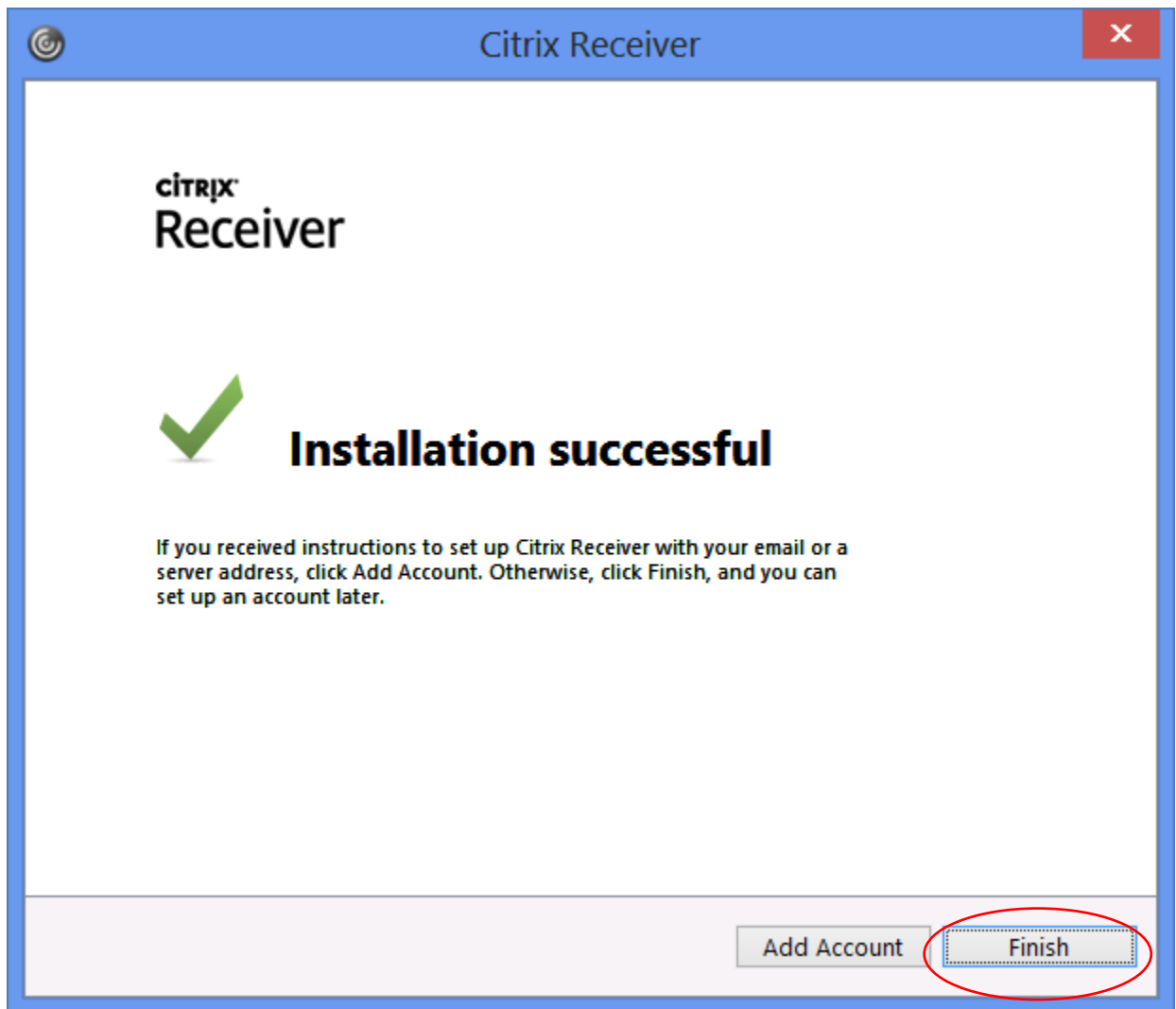
Step 5. Accept the license agreement and click “Next”.



Step 6. DO NOT enable single sign-on. Only click “Install”.



Step 7. DO NOT click “Add Account”. Only click “Finish”.



If you experience any issues installing the Citrix Client, please see the [Troubleshooting](#) section or call the CHRIS [Help Desk](#).